

GOLLER - COLORA

Continuous Dyeing

GOLLER - COLORA

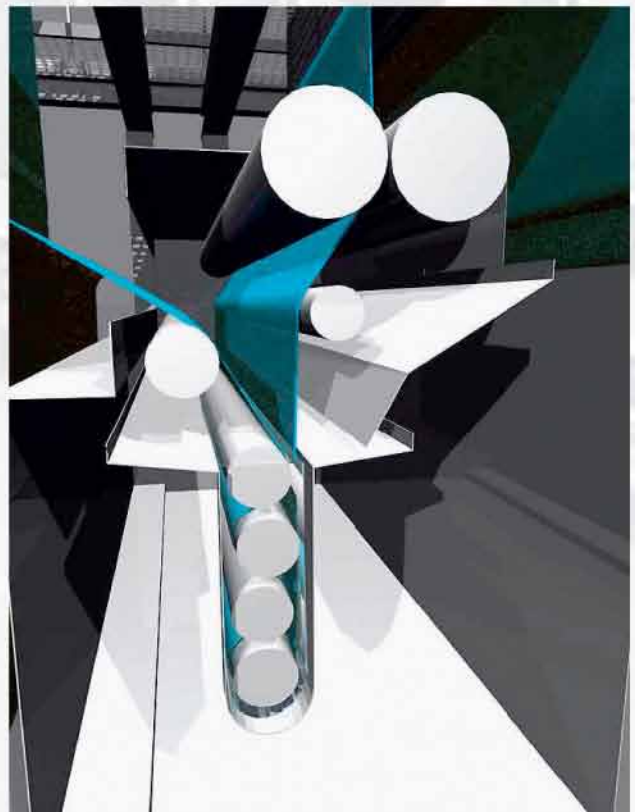
Continuous Dyeing or Colour Development

2



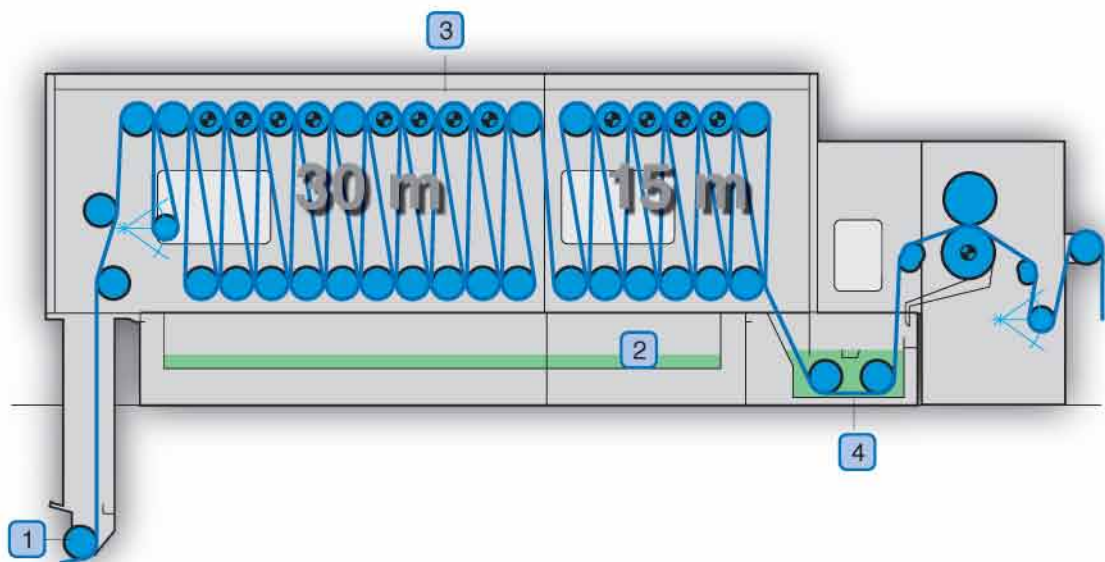
Advantages

- Reproducibility of shade
- Quick colour change
- Economic use of operation agents
- No centre-side variation
- No tailing
- Perfect dye penetration
- Suitable for dyeing and developing
- For all types of dyestuff
- Crease-free and low tension fabric transport
- Fast amortisation
- Easy to operate



GOLLER - COLORA

Core Components



1 Heated entrance
Lips and air lock

2 Sump heating
for absolute saturated steam atmosphere
and even temperature distribution

3 Indirect roof heating

4 Water seal
with temperature control

GOLLER - COLORA

Components

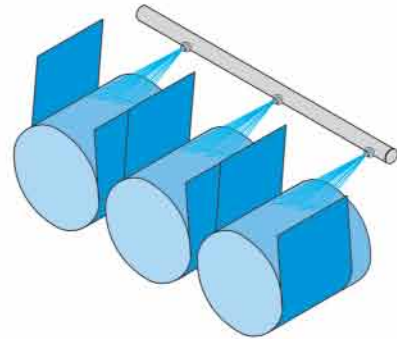
Roof heating

- Even temperature distribution
- 100% condensate free
- Even radiation over length and width



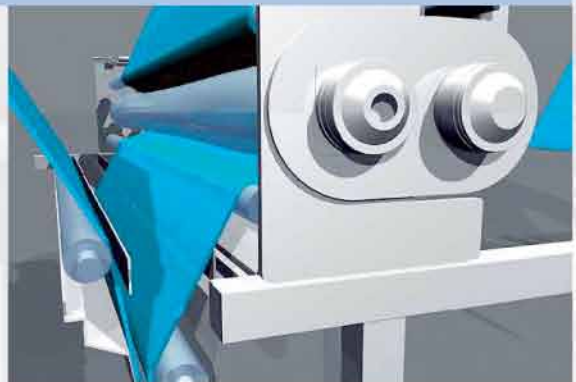
Roller cleaning

- Fast and even cleaning effect
- Quick change over time between dye lots
- PLC controlled



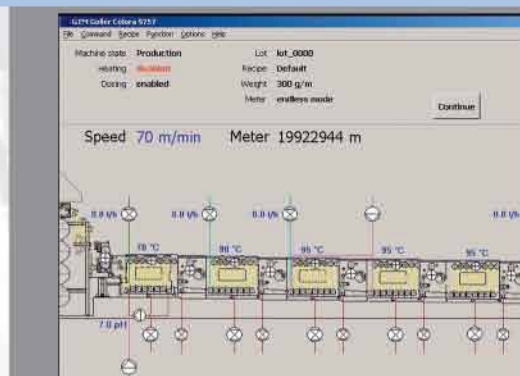
Booster

- Minimal, process related chemical application
- Even distribution of chemicals over the whole fabric width
- Automatic liquor supply with level control



Process control

- Visualisation of the range
- Machine setting and survey of the operation parameters through PC
- Recipe administration for reproducible results
- Error list
- Protocol of machine conditions
- Remote control via modem
- Consumption data registration (optional)

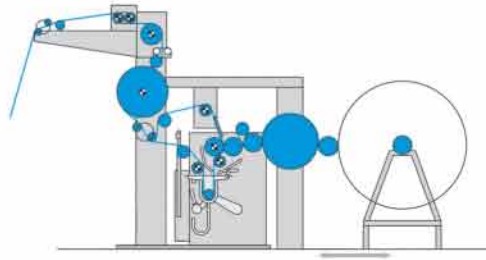


GOLLER - COLORA

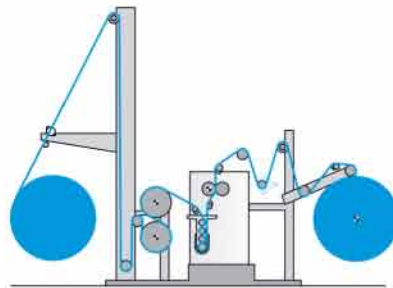
Possible Set-Ups

Cold Pad Batch-Dyeing (knitted fabric)

5



Cold Pad Batch-Dyeing (woven fabric)



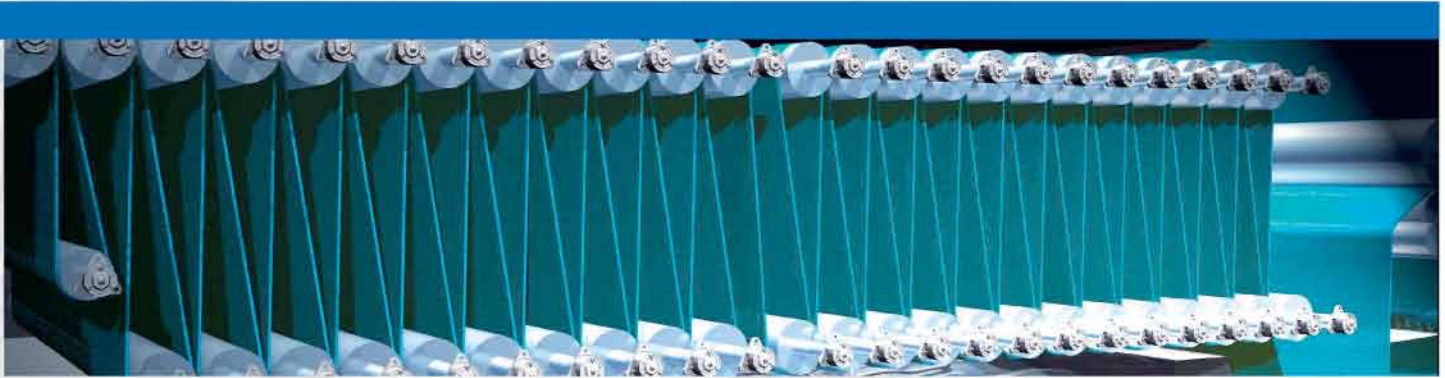
Pad steam dyeing range



Denim overdyeing



GOLLER



For the sake of textile

we develop, manufacture and deliver wet finishing ranges for more than a hundred years to the worldwide market and are one of the most important producers in this market segment.

Focusing on the whole and detail

GOLLER can provide individually designed systems for continuous and efficient production processes. From desizing to end washing we offer a large scope of sophisticated and high-performance ranges.

Focusing on YOU

Due to the ongoing research and development as well as the constant contact with the textile industry, chemical suppliers and institutes you can rely on a wide knowledge.

Environmental consciousness is one of our top priorities

We care for a clean environment due to the economic use of dyestuffs, auxiliary agents, water and energy. Each drop of liquor, which is running through our machines will be returned environmentally friendly.

Let's talk together

There are 65 agents all over the world available for your individual requirements. Or contact us directly!

FONG'S NATIONAL ENGINEERING CO., LTD.

8/F., 22-28 Cheung Tat Road, Tsing Yi, Hong Kong
Phone (852) 2497 3300
Fax (852) 2432 2552
E-mail enquiry@fongs.com
www.fongs.com

FONG'S EUROPE GMBH

Milchgrundstrasse 32, 74523 Schwäbisch Hall, Germany
Phone (49) 791 403 0
Fax (49) 791 403 166
E-mail info@fongs.eu
www.fongs.eu

FONG'S NATIONAL ENGINEERING (SHENZHEN) CO., LTD.

17-19 Lixin Road, Danzhotou Industrial Zone, Nanwan Sub-District,
Longgang District, Shenzhen, Guangdong, PRC Postal Code : 518114
Phone (86) 755 8473 6288
Fax (86) 755 8473 6154
www.fongs.com

GOLLER (HK) Limited

8/F., 22-28 Cheung Tat Road, Tsing Yi, Hong Kong
Phone (852) 2449 9280
Fax (852) 2449 9638
E-mail info@goller-hk.com
www.goller.de

